

Two Components 2K Raised Profile Line Road Marking Machine

Our Product Introduction

for more products please visit us on wagetraffic.com

Basic Information

- Place of Origin: China
- Brand Name: WAGE
- Certification: EMS OHSMS
- Model Number: HG-SVM
- Minimum Order Quantity: 1 set
- Price: 5000-8000usd per set
- Packaging Details: box
- Delivery Time: 1 to 3 weeks
- Payment Terms: L/C, T/T, Western Union, MoneyGram
- Supply Ability: 10 sets per week

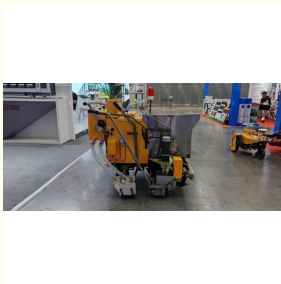


Product Specification

- Marking Model: Two Components Convex Line
- Dispenser: Self Dropping
- Paint Cylinder Volume: 60L*2
- Glass Cylinder: 25kg
- Dimensions: 1400*800*1100mm
- Material: Stainless Steel
- Product Name: Two Component Road Marking Machine
- Spray Thickness: 1-4mm
- Spray Width: 50-400mm
- Weight: 200kg
- Dispenser: Self Dropping
- Highlight: **2K raised profile road marking machine, Two component road marking machine with warranty, Raised profile line marker for highways**



More Images



Product Description

Two Components 2K Raised Profile Line Road Marking Machine

Product Specifications

Attribute	Value
Marking Model	Two components convex line
Dispenser	Self dropping
Paint Cylinder Volume	60L*2
Glass Cylinder	25kg
Dimensions	1400*800*1100mm
Material	Stainless Steel
Product Name	Two Component Road Marking Machine
Spray Thickness	1-4mm
Spray Width	50-400mm
Weight	200kg

Product Overview

Convex line two component road line marking machine



General information: Two-component marking series is divided into spraying and scraping two construction processes. Two coatings with the aid of two pumps or two paint barrels after mixing chemical reaction to form marking. Compared with the hot melt marking, the two-component marking construction has the advantages of environmental protection, high wear resistance, good reflectivity, long service life and easy construction.



HG-20MM-II puts two kinds of coatings in the same barrel separated. After discharging the coatings from the tank, the coatings are fully stirred by an electric stirring shaft. After mixing in the crossing hopper, the chemical reaction is carried out. Finally, the marking is done through the crossing hopper. Compared with spraying two-component marking, scraping marking has the advantages of thicker marking thickness, longer wear resistance, better reflectivity and more uniform mixing.

Technical Parameters

Parameter	Specification
Marking mode	2K convex line
Agitation speed	650r/min
Glass Micro sphere cylinder capacity	25kg
Spraying system	Self dropping
Paint cylinder capacity	60L/tank x 2
Marking thickness	1.2-2.5mm adjustment within ranges
Standard width	150mm
Width optional	100/200/300/400/450mm (scoops replacement)
Size (L*W*H)	1200*900*1100mm
Weight	200kg

Construction



Xian WAGE Traffic Infrastructure Installation Co., Ltd.



+86 15591818803



rita@wagetrffic.com



wagetrffic.com

Room 401, Unit 2, Building 2, Shenglong Plaza, Weiyang Road, Xi'an, 710016, Shaanxi, China