



98:2 MMA+BPO 2K Quickly Drying Airless Spraying Line Striper Marking Machine- External Mixing

Our Product Introduction

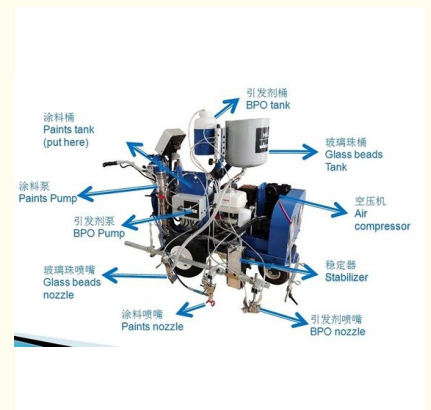
Basic Information

- Place of Origin: China
- Brand Name: WAGE
- Certification: EMS OHSMS
- Model Number: HG-DC
- Minimum Order Quantity: 1 set
- Price: FOB 27500-28500USD / set
- Packaging Details: Composite board box
- Delivery Time: 1 to 4 weeks
- Payment Terms: L/C, T/T, Western Union, MoneyGram
- Supply Ability: 10 set per week

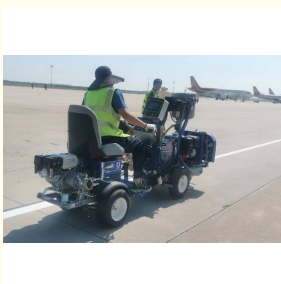


Product Specification

- Paint Type: Double Component
- Marking Model: Spraying
- Paints: 98:2 MMA +BPO
- Move Mold: Booster Pushing
- Special For: Air Port , Port, Rainy Area
- Curing: Quickly Drying In 5 Minute
- Water Proof: Rain Or Water Proof In 5 Minute
- Working: Max -30
- Control System: PLC
- Dimension: 2700*1100*1600 Mm
- Material: Steel
- Spray Pressure: 21 Mpa
- Spray Thickness: 0.2-2mm
- Spray Width: 50-150mm
- Highlight: **MMA+BPO line striper machine.**



More Images



for more products please visit us on wagetraffic.com

Product Description

98:2 MMA+BPO 2K Quickly Drying Airless Spraying Line Striper Marking Machine - External Mixing

Product Specifications

Attribute	Value
Paint type	double component
Marking model	Spraying
Paints	98:2 MMA +BPO
Move mold	booster pushing
Special for	air port, port, rainy area
Curing	Quickly drying in 5 minute
Water proof	rain or water proof in 5 minute
Working	max -30
Control System	PLC
Dimension	2700*1100*1600 mm
Material	Steel
Spray Pressure	21 Mpa
Spray Thickness	0.2-2mm
Spray Width	50-150mm

Product Description

98:2 MMA + BPO Two Components Quickly Drying Spraying Road Marking Machine



Key Advantages

Safe, reliable, durable

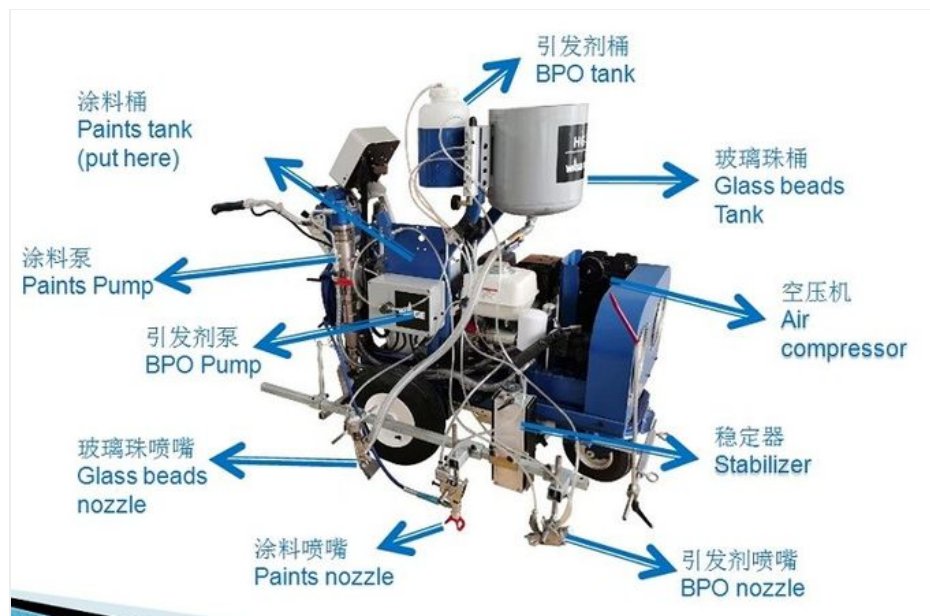
Environmental friendly

Quickly drying - construction fast, quickly curing in 5 minutes achieved, full construction process can be finished in 1 hour

Curing even at cold temperature, max -30 , can working on any season almost

Rain or water proof within minutes, suit well in rainy climate

Marking Machine Structure



Applications

Special good for airport, port, and traffic hub, heavy traffic road, rainy pavement etc.



Traffic hub



Rainy pavement



Airport



Port

Technical Specifications

Main engine	13 HP Honda air-cooled gasoline engine
Auxiliary engine	6.5HP Honda air-cooled gasoline engine
Marking type	Double components spraying(98:2)
Outfitted with	Micro metering pump, Flow sensor, Touching screen
Drive type	Hydrostatic drive
Moving speed	Forward:16km/h, backward: 10km/h
Climbing	20 degrees
Glass bead volume	20L
Spreading system	Pneumatic spraying
Max working pressure	21 Mpa
Compressor working pressure	1.0 Mpa
Max flow rate of coating	8.14L/max
BPO flow	0-1.5L/minute
External dimensions	2700*850*1150 mm
Net weight	320kg

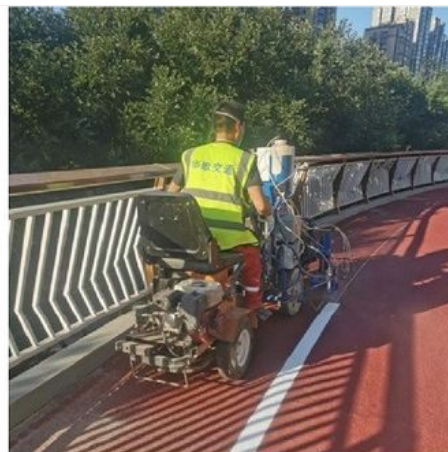
Spraying Method



Construction Examples



Busy street



Bridge



Rita QU

Xi'an Wage Traffic Infrastructure Installation Co.,LTD

Mail: wagetrffic@hotmail.com

Cell/Whatsapp: +86 15591818803

Add: Room 401, Unit 2, Building 2, Shenglong Plaza, Weiyang Road, Xi'an, 710016, Shaanxi, China



Xian WAGE Traffic Infrastructure Installation Co., Ltd.



+86 15591818803



rita@wagetrffic.com



wagetrffic.com

Room 401, Unit 2, Biulding 2, Shenglong Plaza, Weiyang Road, Xi'an, 710016, Shaanxi, China