



Mini Driving Thermoplastic Road Line Marking Tricycle With HTF Heating System

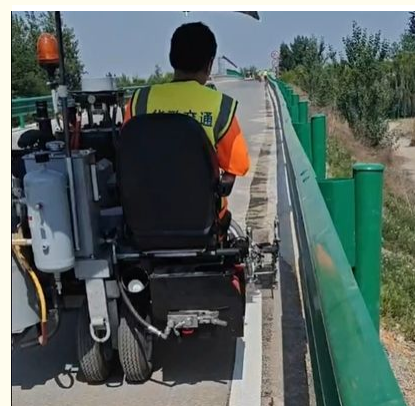
Basic Information

- Place of Origin: China
- Brand Name: WAGE
- Certification: EMS OHSMS
- Model Number: HG-J200
- Minimum Order Quantity: 1 set
- Price: 36000- 40000 USD/ set
- Packaging Details: Composite board
- Delivery Time: 4 to 8weeks
- Payment Terms: T/T,Western Union,MoneyGram,L/C
- Supply Ability: 2 sets per week



Product Specification

- Work Mode: Passenger Driving,
- Version: Thermoplastic
- Marking Speed: 1.8-3KM/h
- Marking Thickness: 1.2-3.0mm
- Paint Tank Capacity: 200kg
- Product Name: Thermoplastic Road Marking Truck
- Marking Mode: Screeding, Extrusion, Convex
- Highlight: **mini thermoplastic road marking tricycle, HTF heating system line marking machine, thermoplastic road line marking equipment**



More Images



Our Product Introduction

for more products please visit us on wagetrain.com

Product Description

Mini Driving Thermoplastic Road Line Marking Tricycle With HTF Heating System

Product Specifications

Attribute	Value
Work Mode	Passenger driving
Version	Thermoplastic
Marking Speed	1.8-3KM/h
Marking Thickness	1.2-3.0mm
Paint Tank Capacity	200kg
Product Name	Thermoplastic Road Marking Truck
Marking Mode	Screeding, Extrusion, Convex

Product Description

Mini Passenger Driving Thermoplastic Road Marking Truck Tricycle is a small size professional equipment for thermoplastic road marking construction, representing a revolutionary upgrade from traditional work methods to automation.



Features gasoline engine, hydraulic drive and mixing system. Thermal oil heating ensures the stability of thermoplastic paint. Cruise control maintains consistent coating thickness, with a control system that switches between virtual and real lines. The independent dual wheels provide balance while allowing flexible turning and easy control. Capable of working with screeding, extrusion or convex line applications, and can simultaneously complete marking arrows and letters.



Technical Parameters

Model	HG-J200
Marking Mode	Screeding, Extrusion, Convex
Engine	25HP Gasoline
Driver	Hydraulic drive, CVT
Pneumatic System	2-cylinder compressor, silent safety valve
Dispenser	Pneumatic, Double Spray
Steering Gear	Independent steering
Heating System	Conduction oil
Moving Speed	1.8-3Km/h
Paint Tank Capacity	200KG
Fuel	LPG
Shoe Size	120,150,180,200,300,400mm

Size (L*W*H)	2100X1800X1400mm
N.Weight	650KG

Rita QU

Xi'an Wage Traffic Infrastructure Installation Co.,LTD

Mail: rita@wagetrffic.com, wagetrffic@hotmail.com

Cell/Whatsapp: +86 15591818803

Web: www.wagetrffic.com

Add: Room 401, Unit 2, Building 2, Shenglong Plaza, Weiyang Road, Xi'an, 710016, Shaanxi, China



Xian WAGE Traffic Infrastructure Installation Co., Ltd.



+86 15591818803



rita@wagetrffic.com



wagetrffic.com

Room 401, Unit 2, Biulding 2, Shenglong Plaza, Weiyang Road, Xi'an, 710016, Shaanxi, China