



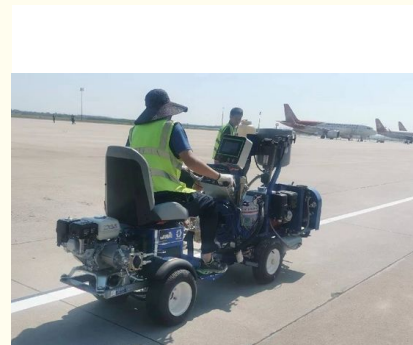
## 98:2 MMA+ BPO Quickly Drying Spraying Line Striping Equipment For Airport Line Marking

Our Product Introduction

for more products please visit us on [wagetrffic.com](http://wagetrffic.com)

### Basic Information

- Place of Origin: China
- Brand Name: WAGE
- Certification: EMS OHSMS
- Model Number: HG-DC
- Minimum Order Quantity: 1 set
- Price: FOB 27500-28500USD / set
- Packaging Details: Composite board box
- Delivery Time: 1 to 4 weeks
- Payment Terms: L/C, T/T, Western Union, MoneyGram
- Supply Ability: 10 set per week

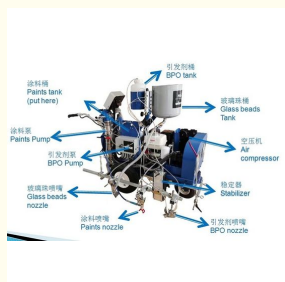


### Product Specification

- Paint Type: Double Component
- Marking Model: Spraying
- Paints: 98:2 MMA+BPO
- Move Mold: Booster Pushing
- Special For: Air Port , Port, Rainy Area
- Curing: Quickly Drying In 5 Minute
- Water Proof: Rain Or Water Proof In 5 Minute
- Working: Max -30
- Highlight: Quickly Drying Spraying Line Striping Equipment , Spraying Line Striping Equipment For Airport, Quickly Drying Airport Line Marking Equipment



### More Images



## Product Description

98:2 two components quickly drying spraying pavement striping machine special for airport port

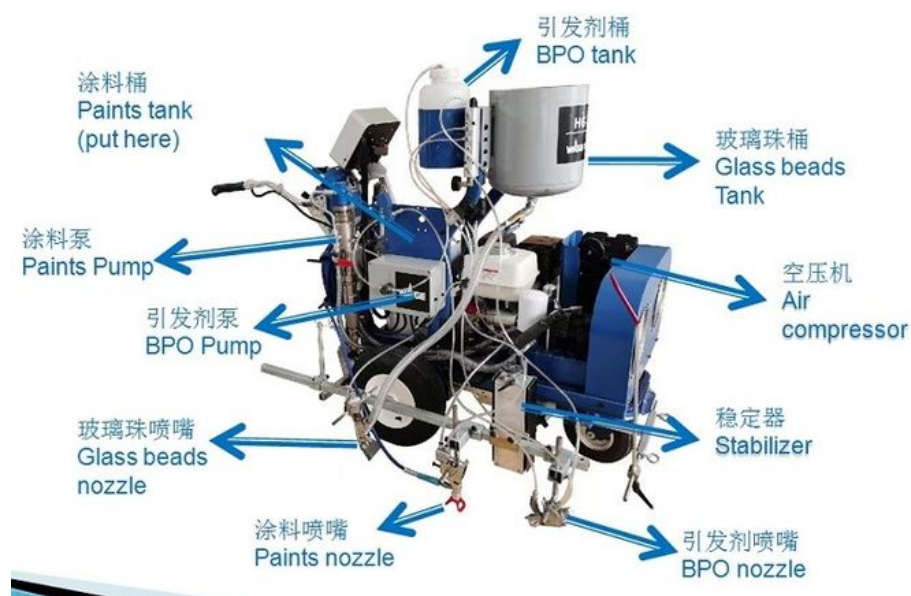
98: 2 MMA +BPO quickly drying spraying pavement striping machine



### Advantage:

1. Safe, reliable, durable.
2. Environmental friendly.
3. Quickly drying – construction fast, quickly curing in 5 minutes achieved, full construction process can be finished in 1 hour.
4. Curing even at cold temperature, max -30 , can working on any season almost.
5. rain or water proof within minutes, suit well in rainy climate

### Marking Machine structure



### Application

Special good for airport, port, and traffic hub, heavy traffic road, rainy pavement etc.



**Traffic hub**



**Rainy pavement**



**Airport**

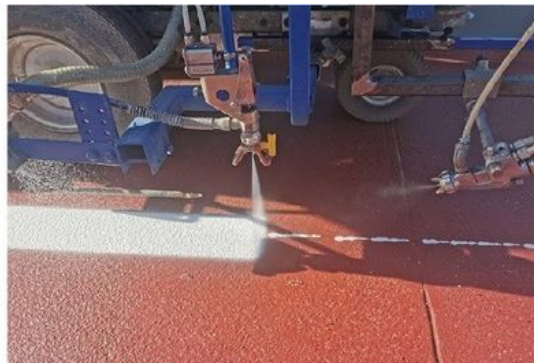


**Port**

### **Characters**

Main engine:	13 HP Honda air-cooled gasoline engine
Auxiliary engine:	6.5HP Honda air-cooled gasoline engine
Marking type:	Double components spraying(98:2)
Outfitted with:	Micro metering pump, Flow sensor, Touching screen
Drive type:	Hydrostatic drive
Moving speed:	Forward:16km/h, backward: 10km/h
Climbing:	20 degrees
Glass bead volume:	20L
Spreading system:	Pneumatic spraying
Max working pressure:	21 Mpa
Compressor working pressure:	1.0 Mpa
Max flow rate of coating:	8.14L/max
BPO flow :	0-1.5L/minute
External dimensions:	2700*850*1150 mm
Net weight:	320kg

### **Spraying way**

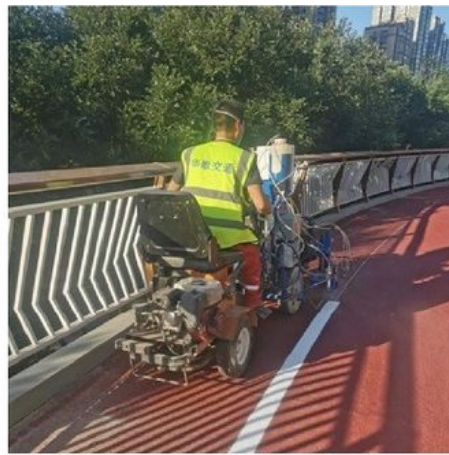


### **Construction spot:**





**Busy street**



**Bridge**



**Xian WAGE Traffic Infrastructure Installation Co., Ltd.**



+86 15591818803



rita@wagetrtraffic.com



wagetrtraffic.com

Room 401, Unit 2, Building 2, Shenglong Plaza, Weiyang Road, Xi'an, 710016, Shaanxi, China